

Minireview: Transcriptional Regulation of Gonadal Development and Differentiation

Susan Y. Park and J. Larry Jameson

Division of Endocrinology, Metabolism, and Molecular Medicine, Department of Medicine, Northwestern University Feinberg School of Medicine, Chicago, Illinois 60611

The embryonic gonad is undifferentiated in males and females until a critical stage when the sex chromosomes dictate its development as a testis or ovary. This binary developmental process provides a unique opportunity to delineate the molecular pathways that lead to distinctly different tissues. The testis comprises three main cell types: Sertoli cells, Leydig cells, and germ cells. The Sertoli cells and germ cells reside in seminiferous tubules where spermatogenesis occurs. The Leydig cells populate the interstitial compartment and produce testosterone. The ovary also comprises three main cell types: granulosa cells, theca cells, and oocytes. The oocytes are surrounded by granulosa and theca cells in follicles that grow and differentiate during characteristic reproductive cycles.

In this review, we summarize the molecular pathways that regulate the distinct differentiation of these cell types in the developing testis and ovary. In particular, we focus on the transcription factors that initiate these cascades. Although most of the early insights into the sex determination pathway were based on human mutations, targeted mutagenesis in mouse models has revealed key roles for genes not anticipated to regulate gonadal development. Defining these molecular pathways provides the foundation for understanding this critical developmental event and provides new insight into the causes of gonadal dysgenesis. (*Endocrinology* 146: 1035–1042, 2005)

LIKE MOST ORGAN systems, mammalian gonadal development involves a complex interplay of multiple cell types, and it occurs during a relatively narrow time window. Thus, it is important to understand the temporal pattern of gene expression as well as the spatial relationships of the developing tissues. For these reasons, most recent studies have used the mouse as a model for examining gonadal development because it is amenable to genetic manipulation as well as detailed histologic and biochemical characterization. During the transition from an undifferentiated gonad to a testis or ovary, the female and male gonad each display characteristic morphological features and patterns of gene expression (1). The coordinated differentiation of the embryonic urogenital ridge, from the bipotential state to sexual dimorphism, provides an opportunity to identify the key factors and commitment steps that underlie gonadal differentiation (2).

In humans, the functional significance of some of these molecules is evident from mutations that impair gonadal development and reproduction (3–5). For example, deletions of the Y chromosomal gene, *SRY* (sex-determining region on the Y chromosome) cause XY male-to-female sex reversal,

whereas *SRY* translocations to the X chromosome lead to XX female-to-male sex reversal (6). The role of *Sry* as a candidate testis-determining gene was confirmed by demonstrating testis development after transgenic expression of *Sry* in XX mice (7). Thus, by using animal models, it is possible to explore genetic pathways in greater detail and elucidate disease pathogenesis.

Many of the gonadal development factors described to date are known to act at the transcriptional level. For the most part, their functions are incompletely understood. Based on homology to other transcription factors, some affect DNA bending (8) or modulate chromatin remodeling (9). Others form interactive complexes that activate transcription (10) or have a role in specifying progenitor cell types (11). Inhibition of gene expression is equally likely to be important as a means to dictate cell fate, but less is known about potential transcriptional repressors. The functional interaction between extracellular ligand molecules and nuclear transcription factors also merits emphasis. For example, extracellular signals can induce transcription factor release and translocation to the nucleus [*i.e.* β -catenin/lymphoid-enhancing factor, Smad (a name combining small and mothers against decapentaplegic), Janus kinase/signal transducer and activator of transcription, nuclear factor- κ B, nuclear factor of activated T cells] (12). Increasing lines of evidence suggest that cross talk among intracellular signaling pathways mediate downstream transcriptional responses. Thus, it is important to identify the extracellular ligands, membrane receptors, and signal transduction pathways associated with gonadal development, as well as the transcription factors.

To date, numerous candidate genes have been identified based on their pattern of expression in the embryonic gonad. Gonadal phenotypes are increasingly recognized in knock-out models originally designed to explore gene function in

First Published Online December 16, 2004

Abbreviations: AMH, Anti-Müllerian hormone; *Arx*, Aristaless-related homeobox; BMP, bone morphogenetic protein; *Dax1* dosage-sensitive sex reversal, adrenal hypoplasia congenita, X chromosome; *Dhh*, desert hedgehog; *dpc*, days post coitum; FGF, fibroblast growth factor; *Fst*, follistatin; HMG, high-mobility group; KTS, lysine-threonine-serine; MIS, Müllerian inhibitory substance; *Pdgfr- α* , platelet-derived growth factor receptor- α ; PMDS, persistent Müllerian duct syndrome; *Pod1*, podocyte; *Sfl*, steroidogenic factor 1; *Sox9*, Sry related, HMG box; *Sry*, sex-determining region on the Y chromosome; *Wt1*, Wilms' tumor-1.

Endocrinology is published monthly by The Endocrine Society (<http://www.endo-society.org>), the foremost professional society serving the endocrine community.

other tissues. In many cases, embryonic lethality precludes analysis of adult reproductive function. Hence, for gene mutations that have pleiotropic effects, the gonadal phenotype must be studied primarily during embryogenesis, or by cell type-specific removal of a genetic locus. Further identification of novel candidate genes will rely on a combination of molecular and genetic tools, including forward and reverse genetics approaches.

A model for gonadal development postulates a series of sequential commitment steps as specific cell types achieve their final differentiated state. A goal in the field is to identify the genetic cascade that programs these events. Some of these steps are cell autonomous, meaning that a cell will pursue a particular fate, relatively independent of its environment. More often, key developmental steps occur via cell-to-cell communication, reflecting direct cellular contacts or responses to paracrine signals. Markers of differentiation include morphological changes, as well as alterations in gene or protein expression. A future challenge is to identify specific targets of key genes in the developmental cascade and to characterize the biochemical events associated with differentiation.

Organogenesis in the Urogenital Ridge

After gastrulation, organogenesis in the mouse embryo starts approximately 8 d post coitum (dpc). The gonad, adrenal gland, kidney, and reproductive tract can be traced to a derivative of the intermediate mesoderm—the urogenital ridge—that forms at embryonic d 9.5. At 10.5 dpc, the genital ridge thickens bilaterally on either side of the dorsal aorta and constitutes an outgrowth of epithelial cells that proliferate at the center of the coelomic cavity and extend along the anterior-posterior axis from the forelimb bud to the hindlimb bud. The urogenital ridge is tethered to the peritoneal cavity by mesentery and comprises two juxtaposed tissues: the gonad rudiment is located medially and the mesonephros, which contains dual Wolffian and Müllerian ducts, is more dorsal (Fig. 1, A and B). The metanephric kidney is an outgrowth of the caudal mesonephros and is visible by 12.5 dpc (Fig. 1B). The adreno-gonad primordium arises between the gonad and mesonephros on the dorsal side and buds anteriorly at 12.5 dpc to form the adrenal gland. In both sexes, the adrenal gland and kidney ascend toward the abdominal

region. In contrast, the final position of the gonad depends on its differentiation into an ovary or testis, and on the interdependent maturation of the sex-specific Müllerian or Wolffian ducts. In the male, owing the action of testosterone, the proximal Wolffian duct is virilized to form the epididymis, vas deferens, and seminal vesicle. Regression of the distal Müllerian duct is mediated by anti-Müllerian hormone (AMH, or Müllerian inhibitory substance, MIS) (13). Another peptide hormone, insulin-like 3 (Insl-3) mediates testicular descent (13, 14). Persistent Müllerian duct syndrome (PMDS) in males is caused by loss of MIS, MIS type I, or type II receptor function (15–17). The absence of testosterone and MIS in females allows regression of the Wolffian duct and development of the Müllerian duct into oviduct, uterus, and upper vagina.

Genetic Program of the Bipotential Gonad

The gonad primordium is morphologically indistinguishable from 10.0 through 11.5 dpc in males and females. The testis cords become visible by 12.0 dpc and reflect the coalescence of Sertoli and germ cells that are surrounded by a layer of thin peritubular myoid cells. In males, the gonad begins to enlarge visibly at about 13.5 dpc, as a consequence of proliferation of germ cells and precursor somatic cells. The ovary, on the other hand, is seemingly more quiescent during this time, but female-specific markers provide evidence that ovarian differentiation is underway (18, 19).

Before expression of the male determining gene, *Sry* at 10.5 dpc, a number of factors act in concert to specify the urogenital ridge in both sexes (Fig. 2). Moreover, because the urogenital ridge is the primordium for the gonad, adrenal, kidney, and reproductive tract, multiple organs are often affected by mutations of these genes.

Wt1 (Wilms' tumor-1) encodes a zinc finger transcription factor originally identified as a tumor suppressor gene. Loss-of-function mutations cause three distinct pediatric syndromes that display urogenital defects affecting male development: WAGR (Wilms' tumor, aniridia, genitourinary abnormality, mental retardation), Denys-Drash syndrome, and Frasier syndrome. The *Wt1* homozygous knockout animal does not form kidney, adrenal, or gonad (20, 21). In the gonad, the expression of *Wt1* at embryonic d 9.5 suggests a role in specifying the coelomic epithelial cells in the devel-

FIG. 1. At 11.5 dpc (A), the bipotential urogenital ridge (*large arrow*) flanks the dorsal aorta (*small arrow*) along the anterior-posterior axis in between the forelimb bud (FL) and hindlimb bud (HL). The gonad is closer to the midline, and the mesonephros develops dorso-lateral to the gonad. At 11.5 dpc, there are approximately 18 tail somites (ts) from the tip of the tail to the posterior end of the hindlimb bud. B, At 12.5 dpc, the male gonad shows distinct morphologic features including a prominent coelomic blood vessel (*arrow*). G, Gonad; M, mesonephros; K, kidney. C, By 13.5 dpc, the male gonad (*left*) is approximately twice the size of the female (*right*) due to increased cellular proliferation. D, Sexual dimorphism between the male (*left*) and female (*right*) gonad is further evident by 14.5 dpc (*scale bars*, 500 μ m).

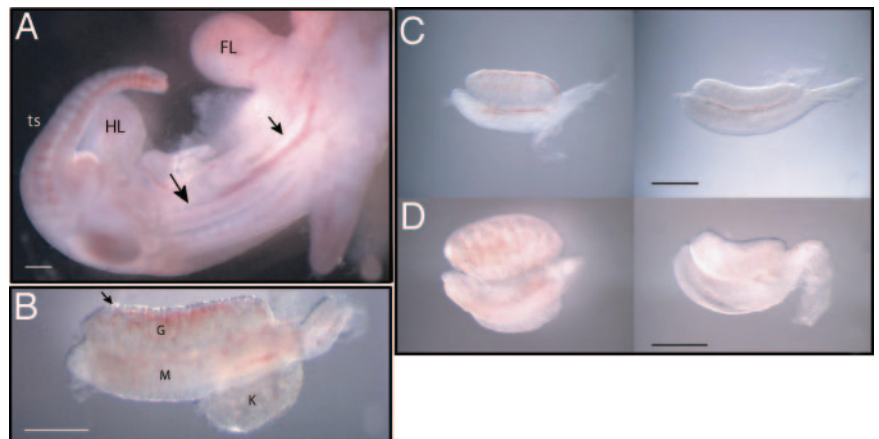
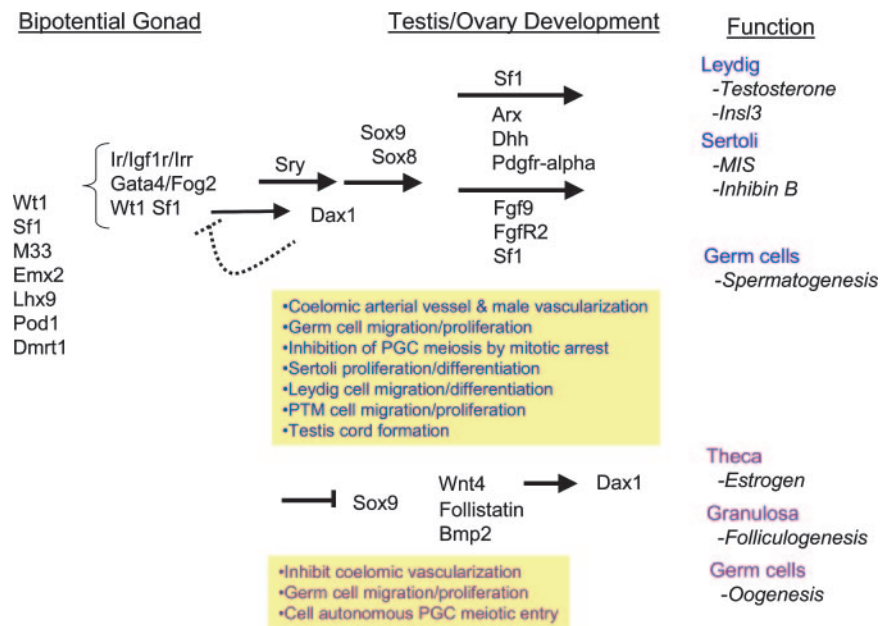


FIG. 2. Summary of genetic pathways involved in gonadal development. The bipotential gonad expresses genes such as *Wt1*, *Sf1*, *Emx2*, *M33*, *Lhx9*, *Pod1*, and *Dmrt1*. Subsequently, expression of the insulin receptor family *Ir*, *Irr*, and *Igf1r*; *GATA4/Fog2*; *Wt1*; and *Sf1* are thought to promote the expression of *Sry* in the male. *Sox9* and *Sox8* are downstream of *Sry*. *Sf1* regulates *Amh* activation in Sertoli cells and steroidogenesis in Leydig cells. In the male, *Dax1* may repress *Sf1* in a dose-dependent manner, modulating the transactivation of *Amh* and genes necessary for steroid hormone biosynthesis. *Dax1* also supports the normal formation of testis cords. Additional factors such as *Arx*, *Dhh*, *Pdgfr- α* , *Fgf9*, and *FgfR2* are involved in Leydig and Sertoli cell differentiation. A description of the cellular events downstream of *Sry* and thus specific to male development is outlined in the center box. PGC, Primordial germ cell; PTM, peritubular myoid cell. Female differentiation requires the activity of *Wnt4* and repression of *Sox9*. Other key factors include *Fst*, *Bmp2*, and *Dax1*.



opening urogenital ridge and ensuring their survival (22). Two major isoforms have relevance to the developing urogenital organs: one alternatively spliced variant contains amino acids KTS (lysine-threonine-serine) (+KTS isoform), and the other lacks KTS (–KTS isoform). The additional amino acids lend flexibility to the protein between the third and fourth zinc finger and thereby diminish its DNA binding property. Both isoforms appear to have nonredundant functions in kidney and gonad development but not in the adrenal (23). In animals with genetically engineered ablation of the –KTS isoform, apoptosis was observed in streak gonads. *Sry* expression is reduced in the gonads of animals lacking the +KTS splice variant. Loss of either splice variant impairs testis descent.

Wt1 functions upstream of two orphan nuclear receptors *Sf1* (steroidogenic factor 1) and *Dax1* (dosage-sensitive sex reversal, adrenal hypoplasia congenita, X chromosome) (11). *Wt1* and *Sf1* synergize to enhance transcription of *Amh*, whereas *in vitro* experiments demonstrate this interaction is repressed by *Dax1* (10). *Sf1* also regulates the expression of multiple genes involved in male differentiation, steroidogenesis, and reproduction through *Sf1*-responsive DNA elements in target gene promoters [Ref. 24; and see review in this issue by Hammer *et al.* (25)]. *Sf1* stimulates *Dax1* transcription, and the two receptors are coexpressed in the adrenal, gonad, pituitary gonadotropes, and ventromedial hypothalamus (26). *Dax1* interacts directly with *Sf1* and functions as a transcriptional repressor of *Sf1*-regulated genes (27). In *Sf1* null mutants, neither XX nor XY animals form the adrenal or gonad. In the absence of *Sf1*, cells in both tissue rudiments undergo apoptosis, indicating that *Sf1* is necessary for survival of early progenitors of the adrenal and gonad (28). At 11.5 dpc, *Sf1* colocalizes with proliferating cells, suggesting that it directly or indirectly stimulates cell proliferation (29). *Dax1*-null males possess gonadal defects in testis cord morphogenesis, peritubular myoid cell proliferation, and spermatogenesis (30, 31). Hence, *Sf1* and *Dax1*

are independently important for normal male gonadal differentiation.

Genes that primarily affect male gonadal differentiation or, have a male-specific expression pattern before distinct morphological changes, continue to expand the network of molecular pathways involved in testis development. Autosomal recessive male-to-female sex reversal (XY male bearing female gonads and feminized external genitalia) has been described in several mouse knockout models. *M33* (polycomb homolog) is involved in chromatin remodeling, yet its precise molecular role in gonadal differentiation is unknown (9). The LIM-domain containing transcription factor *Lhx9* (Lim homeobox) is required for full *Sf1* expression (11, 32). In contrast to the *Sf1* null animal, lack of testis development was not attributed to apoptosis in either *Lhx9* or *M33* mutant mice. *Pod1* (podocyte) is a basic helix-loop-helix transcription factor with a primary role in glomerular visceral epithelial cell (podocyte) differentiation and branching morphogenesis in the kidney and lung (33). In *Pod1* knockout mice, the gonads of both sexes are hypoplastic (34). Expression of *Pod1* in the male gonad was found mainly in the interstitium: peritubular myoid cells, pericytes associated with endothelium, and fetal Leydig cells. Defective coelomic vessel formation and attenuation of migrating endothelial cells from the mesonephros compromised vascularization in *Pod1* knockout male gonads. Although Sertoli development was not affected, there appeared to be expansion of the *Sf1*-positive Leydig cell population. *Dmrt1* (*doublesex*- and *mab*-related transcription factor) is homologous to genes in *Drosophila* and *Caenorhabditis elegans*, and null mutation causes dysmorphic testes in mice (35). *Maestro* (*Mro*), *protease nexin-1* (*Pn-1*), and *vanin-1* (*Vn-1*) were identified based on a sexually dimorphic expression pattern specific to the XY bipotential gonad (36–38). Later in development, *maestro* remains expressed in Sertoli and XY germ cells, whereas *protease nexin-1* and *vanin-1* are Sertoli restricted. Whether any of these newly described factors specify precursor populations, analogous

to the role of *Sry*-expressing Sertoli precursor cells, remains to be tested. The extent to which function can be attributed to a gene product relies on the phenotype of null mutation models in which are affected on all tissues where the gene of interest is expressed. Only recently have tissue-specific mutagenesis studies, for example with *Sf1* and *Sox9* [Sry related, HMG (high-mobility group) box], begun to elucidate spatial requirements attributed to developmentally regulated genes (39–41).

Supporting Cells: The Embryonic Testis Cord

The Sertoli cell is positioned at the base of the testis cord creating the perimeter of the tubule. Closely apposed is the elongated cell layer of peritubular myoid cells circumferentially surrounding the nascent cord. Testis cord morphogenesis is apparent in the male as early as embryonic d 12.0. The testis cords pattern the developing gonad and are the embryologic foundation for the adult seminiferous tubule. Sertoli precursor cells were identified at the coelomic surface (ventro-medial aspect) using dye tracking experiments that labeled dividing cells (42). Sertoli cells and granulosa cells may originate from the same precursor (43). In XX-XY chimeric studies, Sertoli cells were the only cell type that required *Sry* expression in a cell autonomous manner, whereas XX cells were preferentially excluded from the Sertoli population (44).

Sertoli cells, the cell lineage in which *Sry* is solely expressed in the male gonad, are thought to direct the differentiation of other cell types (45). For example, fetal Leydig cell differentiation depends on paracrine signaling through the extracellular protein Desert Hedgehog, which is secreted by Sertoli cells (46). Endothelial cells originating from the mesonephros are induced by a chemoattractant released by the male gonad (47). Two factors that can induce mesonephric cell migration are fibroblast growth factor (FGF) 9 and MIS, both of which are produced by Sertoli cells (48, 49). Sertoli cells also secrete a postulated factor(s) that induces mitotic arrest of germ cells (50). Unlike the female gonad, germ cells in the developing testis undergo mitotic arrest, being held as diploid progenitors until later in spermatogenesis. There is recent evidence that XY germ cells synthesize paracrine factors, including prostaglandin D₂, that induce Sertoli differentiation (51).

Sry expression occurs in a narrow temporal window from 10.5–12.0 dpc. The spatial pattern of *Sry* expression has been clarified by *in situ* hybridization analysis timed to tail somite stages. The central region of the gonad exhibits *Sry* expression first, followed by a rostral to caudal progression along the entire length of the gonad (52). Although *Sry* belongs to the HMG box containing family of nuclear transcription factors, evidence for downstream target genes remains elusive. A closely related gene, *Sox9*, is the other definitive male-determining gene identified thus far. Immunohistochemical labeling of genetically marked *Sry*-positive cells demonstrate that *Sry* and *Sox9* expression overlap in cells of the Sertoli lineage (53). As the *Sry* signal diminishes at 12.5 dpc, *Sox9* expression increases in the male and reaches a peak at 14.5 dpc. *Sox9*, which is weakly expressed in the undifferentiated gonad, is down-regulated in the female. Transgenic expres-

sion of *Sox9* on an XX genetic background is sufficient to cause female-to-male sex reversal (54). Heterozygous human SOX9 mutations cause campomelic dysplasia, a severe skeletal disorder with defective cartilage development (55, 56). Many of these male patients also have gonadal dysgenesis. Heterozygous mice haploinsufficient for *Sox9* die perinatally due to skeletal malformations (57). An ingenious strategy was designed to transmit the knockout allele through the germline of otherwise wild-type male and female parents by the use of spermatocyte- and oocyte-specific promoters, respectively, enabling the zygote to obtain both knockout alleles (41). These experiments confirm that *Sox9* is necessary for male gonadal development. Notably, *Sox9* null embryos have elevated *Sry* expression, suggesting a negative feedback regulatory loop that down-regulates *Sry* in the mouse. Experimental evidence using mouse strains with a variety of *Sry* alleles supports the assertion that the precise timing, duration, threshold transcript levels, and protein isoform half-life, influence downstream events dependent on *Sry* expression (58, 59). *Sox8*, another member of the *Sox* HMG box containing transcription factor gene family, is also active in male development (60). It is possible that *Sry*, *Sox9*, and *Sox8* have partially redundant functions.

GATA4 and *Fog2* (friend of GATA) are important for cardiac morphogenesis but also influence gonadal development. A *GATA4* knock-in mutation, which prevents nuclear association of *GATA4* and *Fog2*, eliminates expression of the male differentiation markers *Sox9* and *Amh*. *Fog2* null mice have decreased *Sry* expression, loss of *Sox9*, *Amh*, and Desert hedgehog (*Dhh*), but persistence of the female marker *Wnt4* (61). The *GATA4* knock-in and *Fog2* null mice retain *Sf1* and *Wt1* expression, suggesting a hierarchical network. Similarly, *Irr*, *Irrr*, *Igf1r* (insulin receptor, insulin-related receptor, Igf1 receptor) triple mutants have low *Sry* and *Sox9* expression and exhibit male-to-female sex reversal, thus implicating the insulin signaling pathway in male differentiation (62).

Anti-Müllerian hormone (AMH) or MIS is a key peptide hormone produced by Sertoli cells. It mediates the regression of the Müllerian duct, which would otherwise form female reproductive tract structures. In genetic males, PMDS is due to loss of MIS or cognate receptors present in mesenchymal cells of the Müllerian duct. PMDS is an example of male pseudohermaphroditism whereby males with testicular tissue appear feminized externally due to failure of testis descent caused by the presence of uterus and oviduct. Müllerian regression involves activation of a β -catenin-dependent pathway in a rostral-to-caudal manner (63). A number of factors are known to regulate *Amh* transactivation. These include *Sf1*, *WT1*, *GATA4*, *Sox9*, and *Sox8* (10, 64–66). MIS may have other functions that include mesonephric cell migration and vascularization in the male gonad, and germ cell loss in the ovary (49, 67).

Proliferation of pre-Sertoli cells is an important event in male development (29). By 13.5 dpc, the male gonad is twice the size of the female (see Fig. 1, C and D). One factor linked to proliferation is *Fgf9*. *Fgf9* null mice show varying degrees of male-to-female sex reversal (48). A number of *Fgf* receptors have been identified and *Fgfr2* is thought to direct Sertoli cell differentiation perhaps as a result of nuclear translocation, which occurs simultaneously with translocation of

Sry and *Sox9* (68). A secreted protein, *Fgf9*, is a candidate male gonad-specific chemoattractant signal that induces migration of cells from the mesonephros into the gonad. Immigrant cells have been identified mainly as endothelial and peritubular myoid cells (47). Migration of these cells is necessary for testis cord morphogenesis (69) and induction of *Sox9* expression (70). This migration of mesonephric cells does not occur in females presumably because a chemoattractant is absent. Furthermore, once XX germ cells enter meiosis at 13.5 dpc, migration from the mesonephros is inhibited (71).

Hormone Biosynthesis: The Interstitial Space

Once sex determination has occurred, the ensuing phenotypic differentiation depends heavily on the production of steroid hormones. In the male, testosterone stabilizes the Wolffian duct and is converted by 5α -reductase to the potent derivative, dihydrotestosterone, which induces virilization of the male external genitalia. In the female, aromatase mediates estradiol synthesis. In some species, aromatase expression is critical for ovarian development; its role in ovary development in mammals is less clear, although aromatase deficiency is associated with transdifferentiation of granulosa cells into Sertoli-like cells (72).

Sfl is restricted to Leydig cells after 13.5 dpc and mediates expression of several genes encoding enzymes required for testosterone biosynthesis including *StAR* (steroidogenic acute regulatory protein), *Cyp11a1*, *Cyp17* (cytochrome P450 hydroxylases), and 3β HSD (hydroxysteroid dehydrogenase). The factors required for Leydig cell determination and lineage development are incompletely understood. Moreover, their origin, whether from immigrant mesonephric cells or progenitors within the gonad, remains equivocal. Leydig cell fate appears to rely on paracrine signals. *Dhh*, a Sertoli-secreted factor, induces expression of *Cyp11a1* (side-chain cleavage) in the Leydig cell (46). The *Dhh* signal is received by the receptor patched (*Ptc1*), which is expressed on Leydig cells. *Dhh* is thought to play a crucial role in Leydig cell differentiation and is an example of a paracrine signaling pathway identified between two developing cell types. Genetic analysis has placed *Pdgfr- α* (platelet-derived growth factor receptor- α) upstream of *Dhh* (73). Like *Fgf9*, *Pdgfr- α* induce mesonephric migration, and *Pdgfr- α* is necessary in the gonad for full *Cyp11a1* expression. The X-linked gene *Arx* (Aristaless-related homeobox) also influences Leydig cell development. However, it is expressed mainly in peritubular myoid cells, endothelial cells, and in the epithelium of the tunica albuginea (74).

Female Embryonic Gonadal Development

Relatively few genes have been shown to exhibit a female-specific pattern of gene expression early in gonadal development. To date, no gene has been shown to be a female-determining gene, as defined by conferring complete female-to-male sex reversal when mutated on an XX background, or by conferring male-to-female sex reversal after overexpression on an XY background. The *Dax1* gene was initially suggested as a pro-ovarian, or anti-testis, candidate gene because its duplication on an XY background is asso-

ciated with impaired testis development (75, 76). However, *Dax1* loss of function on the XX background does not prevent ovary development (31). Subsequent studies have shown an unexpected role for *Dax1* in testis development (77), indicating that its actions are highly dependent on the timing and level of expression.

Although male somatic tissue can survive in the absence of germ cells, the female gonad depends on migratory germ cells to populate the undifferentiated primordium (78). In the female gonad, germ cells begin entering meiosis at 13.5 dpc and initiate a dynamic paracrine relationship with supporting cells destined to become cumulus and granulosa cells (79).

A growing list of genes exhibit an ovary-specific expression pattern. For example, *follistatin* (*Fst*) is highly expressed in the developing ovary relative to the testis (19). Follistatin binds members of the activin/TGF β /bone morphogenetic protein (BMP) family. Thus, it may regulate the activity of one or more of these factors. *Stra8* (stimulated by retinoic acid) is also selectively expressed in the developing ovary and is thought to play a role in regulation of meiosis (80). Targeted mutagenesis and transgenic overexpression experiments will clarify the functions of these factors.

There has been postulated a "Z factor" that could act to suppress pro-testis events carried out by autosomal or X-linked genes in both XY and XX backgrounds (81). The Z factor would act downstream of *Sry* in genetic males. Therefore, the Z factor would be repressed by *Sry* in the male, and independent of *Sry* on an XX genetic background. Loss of a Z factor would be sex-reversing on XX (female-to-male), but gain-of-function on XY may or may not exhibit sex reversal (male-to-female) depending on whether the Z factor can override the downstream events of *Sry*. One candidate for the Z factor is *Wnt4* (Wingless-related integration site). Female *Wnt4* null mice develop virilizing gonads and Wolffian derivatives (82). This gonadal phenotype reflects the action of *Wnt4* to induce the migration of steroidogenic precursors of the adreno-gonad primordium into the anterior region of the gonad (83). Hence, misdirected adrenal steroidogenic cells become localized in the XX *Wnt4* knockout gonad. Secondly, *Wnt4* is down-regulated in males, whereas its expression remains strong in females where it prevents coelomic vascularization (a male feature, see Fig. 1B) through a molecular pathway that involves *Fst* and *Bmp2* (19). By inhibiting vascularization, *Wnt4* may prevent the proliferative growth expansion characteristic of male development. Thus, the homozygous knockout female gonad appears somewhat more male-like in shape and size. Externally, however, homozygous knockouts exhibit female genitalia. In humans, a loss-of-function mutation in *WNT4* caused Mayer-Rokitansky-Kuster-Hauser syndrome, which is characterized by defective development of Müllerian derivatives (84). Duplication of a chromosomal region containing *WNT4* was associated with a case of human XY sex reversal (85). However, overexpression of *Wnt4* on an XY background does not lead to XY sex reversal in the mouse (83, 86). Thus, the major roles of *Wnt4* in the female appear to include suppression of androgen-producing interstitial cells, inhibition of testis-like vascularization, and support of Müllerian derivatives. *Wnt4* is also essential for kidney (87), mammary gland (88), and

pituitary development (89), as well as normal functioning of the adrenal cortex (90).

A dominant insertional mutation led to identification of a female-to-male sex reversal phenotype in the *Odsex* (Ocular degeneration with sex reversal) mouse (91). The *Odsex* mouse was initially thought to lack a repressor for *Sox9*, allowing unabated *Sox9* expression ectopically in genetic females. Therefore, one of the functions of a Z factor could be to suppress *Sox9* action in the female gonad. However, it is also possible that regulatory elements contained in the inserted transgene promote activation of *Sox9*.

Nucleo-cytoplasmic shuttling of transcription factors may also provide an important regulatory step in sex determination. Organ culture experiments using the nuclear export blocker, leptomycin B, resulted in male-characteristic *Sox9* and *MIS* expression in XX gonad organ cultures (92). Thus, growth factors may be able to modulate transcriptional control by altering the location as well as the activity of various transcription factors.

Central Questions and Future Directions

The molecular pathways directing cellular differentiation can be traced back to cells of pluripotential origin. Thus, development must occur through a series of commitment steps driven by cell-to-cell contacts and paracrine interactions. In some cases, committed cells initiate a cell-autonomous program, as perhaps illustrated by *Sry* and *Sox9* actions in Sertoli cells. In other cases, differentiation is driven by secreted factors as illustrated by *Dhh*, *Wnt4*, and *Fgf9*. These cell autonomous and paracrine pathways are not mutually exclusive, and it is likely that most commitment steps integrate a series of internal and external signals. The sex determination pathway provides a unique paradigm for considering these events because the commitment steps lead to distinct cell types within a narrow time frame.

Despite impressive progress in this field, a number of challenging questions remain. What factors initiate *Sry* expression and what are its cellular targets? Are *Sry* and *Sox9* expression linked directly or do they reflect parallel, partially redundant pathways? Given that *Sox9* is sufficient to induce Sertoli cell development, what are its targets and how does it induce a network of genes they convey morphological changes characteristic of the testis? What are the genetic and molecular events that dictate ovary development? Although it is known that germ cells interact actively with somatic cells, what are the molecular and cellular events that control germ cell replication and entry into meiosis? How do meiotic germ cells foster ovary development? Implicit in these questions is the critical feature of timing during gonadal development. Once the Sertoli program is initiated, the developing testis induces mitotic arrest of germ cells. On the other hand, if Sertoli development is delayed, as occurs with various *Sry* alleles and mouse genetic backgrounds, germ cells begin to enter meiosis, and this step may further impair testis development, leading to mixed testis/ovary tissue or gonadal dysgenesis. Thus, future studies need to carefully assess pathways that control the timing and level of expression of regulatory factors.

Further understanding of these molecular and cellular

functions in the gonad will provide examples of paradigms used to control cellular differentiation in other tissues. This knowledge will also be useful for the characterization of intersex cases and perhaps additional causes of idiopathic infertility. Parallel investigation of human mutations and animal models can accelerate progress in this field by identifying candidate genes and clarifying their roles in development.

Acknowledgments

Received November 8, 2004. Accepted December 10, 2004.

Address all correspondence and requests for reprints to: J. Larry Jameson, Division of Endocrinology, Metabolism, and Molecular Medicine, Department of Medicine, Northwestern University Feinberg School of Medicine, Chicago, Illinois 60611. E-mail: ljameson@northwestern.edu.

This work was supported in part by National Institutes of Health Grants HD044801, HD043425, and a fellowship (to S.Y.P.) from The Dolores Zohrab Liebmann Fund.

References

1. Koopman P, Bullejos M, Loffler K, Bowles J 2002 Expression-based strategies for discovery of genes involved in testis and ovary development. *Novartis Found Symp* 244:240–257
2. Brennan J, Capel B 2004 One tissue, two fates: molecular genetic events that underlie testis versus ovary development. *Nat Rev Genet* 5:509–521
3. Achermann JC, Ozisik G, Meeks JJ, Jameson JL 2002 Genetic causes of human reproductive disease. *J Clin Endocrinol Metab* 87:2447–2454
4. MacLaughlin DT, Donahoe PK 2004 Sex determination and differentiation. *N Engl J Med* 350:367–378
5. Koopman P 2001 The genetics and biology of vertebrate sex determination. *Cell* 105:843–847
6. Harley VR, Clarkson MJ, Argentaro A 2003 The molecular action and regulation of the testis-determining factors, SRY (sex-determining region on the Y chromosome) and SOX9 [SRY-related high-mobility group (HMG) box 9]. *Endocr Rev* 24:466–487
7. Koopman P, Gubbay J, Vivian N, Goodfellow P, Lovell-Badge R 1991 Male development of chromosomally female mice transgenic for *Sry*. *Nature* 351:117–121
8. Phillips NB, Nikolskaya T, Jancso-Radek A, Ittah V, Jiang F, Singh R, Haas E, Weiss MA 2004 *Sry*-directed sex reversal in transgenic mice is robust with respect to enhanced DNA bending: comparison of human and murine HMG boxes. *Biochemistry* 43:7066–7081
9. Katoh-Fukui Y, Tsuchiya R, Shiroishi T, Nakahara Y, Hashimoto N, Noguchi K, Higashinakagawa T 1998 Male-to-female sex reversal in M33 mutant mice. *Nature* 393:688–692
10. Nachtigal MW, Hirokawa Y, Enyeart-VanHouten DL, Flanagan JN, Hammer GD, Ingraham HA 1998 Wilms' tumor 1 and Dax-1 modulate the orphan nuclear receptor SF-1 in sex-specific gene expression. *Cell* 93:445–454
11. Wilhelm D, Englert C 2002 The Wilms tumor suppressor WT1 regulates early gonad development by activation of Sf1. *Genes Dev* 16:1839–1851
12. Xu L, Massague J 2004 Nucleocytoplasmic shuttling of signal transducers. *Nat Rev Mol Cell Biol* 5:209–219
13. di Clemente N, Josso N, Gouedard L, Belville C 2003 Components of the anti-Mullerian hormone signaling pathway in gonads. *Mol Cell Endocrinol* 211:9–14
14. Nef S, Parada LF 1999 Cryptorchidism in mice mutant for *Insl3*. *Nat Genet* 22:295–299
15. Behringer RR, Finegold MJ, Cate RL 1994 Mullerian-inhibiting substance function during mammalian sexual development. *Cell* 79:415–425
16. Mishina Y, Rey R, Finegold MJ, Matzuk MM, Josso N, Cate RL, Behringer RR 1996 Genetic analysis of the Mullerian-inhibiting substance signal transduction pathway in mammalian sexual differentiation. *Genes Dev* 10:2577–2587
17. Jamin SP, Arango NA, Mishina Y, Hanks MC, Behringer RR 2002 Requirement of *Bmpr1a* for Mullerian duct regression during male sexual development. *Nat Genet* 32:408–410
18. Bullejos M, Bowles J, Koopman P 2002 Extensive vascularization of developing mouse ovaries revealed by caveolin-1 expression. *Dev Dyn* 225:95–99
19. Yao HH, Matzuk MM, Jorgez CJ, Menke DB, Page DC, Swain A, Capel B 2004 Follistatin operates downstream of *Wnt4* in mammalian ovary organogenesis. *Dev Dyn* 230:210–215
20. Kreidberg JA, Sariola H, Loring JM, Maeda M, Pelletier J, Housman D, Jaenisch R 1993 WT-1 is required for early kidney development. *Cell* 74:679–691
21. Moore AW, McInnes L, Kreidberg J, Hastie ND, Schedl A 1999 YAC comple-

- mentation shows a requirement for Wt1 in the development of epicardium, adrenal gland and throughout nephrogenesis. *Development* 126:1845–1857
22. **Armstrong JF, Pritchard-Jones K, Bickmore WA, Hastie ND, Bard JB** 1993 The expression of the Wilms' tumour gene, WT1, in the developing mammalian embryo. *Mech Dev* 40:85–97
 23. **Hammes A, Guo JK, Lutsch G, Leheste JR, Landrock D, Ziegler U, Gubler MC, Schedl A** 2001 Two splice variants of the Wilms' tumor 1 gene have distinct functions during sex determination and nephron formation. *Cell* 106:319–329
 24. **Achermann JC, Meeks JJ, Jameson JL** 2001 Phenotypic spectrum of mutations in DAX-1 and SF-1. *Mol Cell Endocrinol* 185:17–25
 25. **Hammer GD, Parker KL, Schimmer BP** 2005 Minireview: transcriptional regulation of adrenocortical development. *Endocrinology* 146:1018–1024
 26. **Ikeda Y, Swain A, Weber TJ, Hentges KE, Zanaria E, Lalli E, Tamai KT, Sassone-Corsi P, Lovell-Badge R, Camerino G, Parker KL** 1996 Steroidogenic factor 1 and Dax-1 colocalize in multiple cell lineages: potential links in endocrine development. *Mol Endocrinol* 10:1261–1272
 27. **Ito M, Yu R, Jameson JL** 1997 DAX-1 inhibits SF-1-mediated transactivation via a carboxy-terminal domain that is deleted in adrenal hypoplasia congenita. *Mol Cell Biol* 17:1476–1483
 28. **Luo X, Ikeda Y, Parker KL** 1994 A cell-specific nuclear receptor is essential for adrenal and gonadal development and sexual differentiation. *Cell* 77:481–490
 29. **Schmahl J, Eicher EM, Washburn LL, Capel B** 2000 Sry induces cell proliferation in the mouse gonad. *Development* 127:65–73
 30. **Meeks JJ, Crawford SE, Russell TA, Morohashi KI, Weiss J, Jameson JL** 2003 Dax1 regulates testis cord organization during gonadal differentiation. *Development* 130:1029–1036
 31. **Yu RN, Ito M, Saunders TL, Camper SA, Jameson JL** 1998 Role of Ahch in gonadal development and gametogenesis. *Nat Genet* 20:353–357
 32. **Birk OS, Casiano DE, Wassif CA, Cogliati T, Zhao L, Zhao Y, Grinberg A, Huang S, Kreidberg JA, Parker KL, Porter FD, Westphal H** 2000 The LIM homeobox gene *Lhx9* is essential for mouse gonad formation. *Nature* 403:909–913
 33. **Quaggin SE, Schwartz L, Cui S, Igarashi P, Deimling J, Post M, Rossant J** 1999 The basic-helix-loop-helix protein *pod1* is critically important for kidney and lung organogenesis. *Development* 126:5771–5783
 34. **Cui S, Ross A, Stallings N, Parker KL, Capel B, Quaggin SE** 2004 Disrupted gonadogenesis and male-to-female sex reversal in *Pod1* knockout mice. *Development* 131:4095–4105
 35. **Raymond CS, Murphy MW, O'Sullivan MG, Bardwell VJ, Zarkower D** 2000 *Dmrt1*, a gene related to worm and fly sexual regulators, is required for mammalian testis differentiation. *Genes Dev* 14:2587–2595
 36. **Bowles J, Bullejos M, Koopman P** 2000 A subtractive gene expression screen suggests a role for *vanin-1* in testis development in mice. *Genesis* 27:124–135
 37. **Smith L, Van Hateren N, Willan J, Romero R, Blanco G, Siggers P, Walsh J, Banerjee R, Denny P, Ponting C, Greenfield A** 2003 Candidate testis-determining gene, *Maestro* (*Mro*), encodes a novel HEAT repeat protein. *Dev Dyn* 227:600–607
 38. **Grimmond S, Van Hateren N, Siggers P, Arkell R, Larder R, Soares MB, de Fatima Bonaldo M, Smith L, Tymowska-Lalanne Z, Wells C, Greenfield A** 2000 Sexually dimorphic expression of protease *nexin-1* and *vanin-1* in the developing mouse gonad prior to overt differentiation suggests a role in mammalian sexual development. *Hum Mol Genet* 9:1553–1560
 39. **Jeyasuria P, Ikeda Y, Jamin SP, Zhao L, De Rooij DG, Themmen AP, Behringer RR, Parker KL** 2004 Cell-specific knockout of steroidogenic factor 1 reveals its essential roles in gonadal function. *Mol Endocrinol* 18:1610–1619
 40. **Zhao L, Bakke M, Parker KL** 2001 Pituitary-specific knockout of steroidogenic factor 1. *Mol Cell Endocrinol* 185:27–32
 41. **Chaboissier MC, Kobayashi A, Vidal VI, Lutzkendorf S, van de Kant HJ, Wegner M, de Rooij DG, Behringer RR, Schedl A** 2004 Functional analysis of *Sox8* and *Sox9* during sex determination in the mouse. *Development* 131:1891–1901
 42. **Karl J, Capel B** 1998 Sertoli cells of the mouse testis originate from the coelomic epithelium. *Dev Biol* 203:323–333
 43. **Albrecht KH, Eicher EM** 2001 Evidence that *Sry* is expressed in pre-Sertoli cells and Sertoli and granulosa cells have a common precursor. *Dev Biol* 240:92–107
 44. **Palmer SJ, Burgoyne PS** 1991 In situ analysis of fetal, prepubertal and adult XX-XY chimaeric mouse testes: Sertoli cells are predominantly, but not exclusively, XY. *Development* 112:265–268
 45. **Swain A, Lovell-Badge R** 1999 Mammalian sex determination: a molecular drama. *Genes Dev* 13:755–767
 46. **Yao HH, Whoriskey W, Capel B** 2002 Desert hedgehog/patched 1 signaling specifies fetal Leydig cell fate in testis organogenesis. *Genes Dev* 16:1433–1440
 47. **Martineau J, Nordqvist K, Tilmann C, Lovell-Badge R, Capel B** 1997 Male-specific cell migration into the developing gonad. *Curr Biol* 7:958–968
 48. **Colvin JS, Green RP, Schmahl J, Capel B, Ornitz DM** 2001 Male-to-female sex reversal in mice lacking fibroblast growth factor 9. *Cell* 104:875–889
 49. **Ross AJ, Tilmann C, Yao H, MacLaughlin D, Capel B** 2003 AMH induces mesonephric cell migration in XX gonads. *Mol Cell Endocrinol* 211:1–7
 50. **McLaren A, Southey D** 1997 Entry of mouse embryonic germ cells into meiosis. *Dev Biol* 187:107–113
 51. **Adams IR, McLaren A** 2002 Sexually dimorphic development of mouse primordial germ cells: switching from oogenesis to spermatogenesis. *Development* 129:1155–1164
 52. **Bullejos M, Koopman P** 2001 Spatially dynamic expression of *Sry* in mouse genital ridges. *Dev Dyn* 221:201–205
 53. **Seikido R, Bar I, Narvaez V, Penny G, Lovell-Badge R** 2004 *SOX9* is up-regulated by the transient expression of *SRY* specifically in Sertoli cell precursors. *Dev Biol* 274:271–279
 54. **Vidal VP, Chaboissier MC, de Rooij DG, Schedl A** 2001 *Sox9* induces testis development in XX transgenic mice. *Nat Genet* 28:216–217
 55. **Foster JW, Dominguez-Steglich MA, Guioli S, Kowk G, Weller PA, Stevanovic M, Weissenbach J, Mansour S, Young ID, Goodfellow PN, Brook JD, Schafer AJ** 1994 Campomelic dysplasia and autosomal sex reversal caused by mutations in an *SRY*-related gene. *Nature* 372:525–530
 56. **Wagner T, Wirth J, Meyer J, Zabel B, Held M, Zimmer J, Pasantes J, Bricarelli FD, Keutel J, Huertel E, Wolf U, Tommerup N, Schempp W, Scherer G** 1994 Autosomal sex reversal and campomelic dysplasia are caused by mutations in and around the *SRY*-related gene *SOX9*. *Cell* 79:1111–1120
 57. **Bi W, Huang W, Whitworth DJ, Deng JM, Zhang Z, Behringer RR, de Crombrughe B** 2001 Haploinsufficiency of *Sox9* results in defective cartilage primordia and premature skeletal mineralization. *Proc Natl Acad Sci USA* 98:6698–6703
 58. **Albrecht KH, Young M, Washburn LL, Eicher EM** 2003 *Sry* expression level and protein isoform differences play a role in abnormal testis development in C57BL/6j mice carrying certain *Sry* alleles. *Genetics* 164:277–288
 59. **Palmer SJ, Burgoyne PS** 1991 The *Mus musculus domesticus* *Tdy* allele acts later than the *Mus musculus musculus* *Tdy* allele: a basis for XY sex-reversal in C57BL/6-YPOS mice. *Development* 113:709–714
 60. **Schepers G, Wilson M, Wilhelm D, Koopman P** 2003 *SOX8* is expressed during testis differentiation in mice and synergizes with *SF1* to activate the *Amh* promoter in vitro. *J Biol Chem* 278:28101–28108
 61. **Tevosian SG, Albrecht KH, Crispino JD, Fujiwara Y, Eicher EM, Orkin SH** 2002 Gonadal differentiation, sex determination and normal *Sry* expression in mice require direct interaction between transcription partners *GATA4* and *FOG2*. *Development* 129:4627–4634
 62. **Nef S, Verma-Kurvari S, Merenmies J, Vassalli JD, Efstratiadis A, Accili D, Parada LF** 2003 Testis determination requires insulin receptor family function in mice. *Nature* 426:291–295
 63. **Allard S, Adin P, Guedard L, di Clemente N, Josso N, Orgebin-Crist MC, Picard JY, Xavier F** 2000 Molecular mechanisms of hormone-mediated Mullerian duct regression: involvement of β -catenin. *Development* 127:3349–3360
 64. **Shen WH, Moore CC, Ikeda Y, Parker KL, Ingraham HA** 1994 Nuclear receptor steroidogenic factor 1 regulates the mullerian inhibiting substance gene: a link to the sex determination cascade. *Cell* 77:651–661
 65. **De Santa Barbara P, Bonneaud N, Boizet B, Desclozeaux M, Moniot B, Sudbeck P, Scherer G, Poulat F, Berta P** 1998 Direct interaction of *SRY*-related protein *SOX9* and steroidogenic factor 1 regulates transcription of the human anti-Mullerian hormone gene. *Mol Cell Biol* 18:6653–6665
 66. **Viger RS, Mertineit C, Trasler JM, Nemer M** 1998 Transcription factor *GATA-4* is expressed in a sexually dimorphic pattern during mouse gonadal development and is a potent activator of the Mullerian inhibiting substance promoter. *Development* 125:2665–2675
 67. **Vigier B, Watrin F, Magre S, Tran D, Josso N** 1987 Purified bovine AMH induces a characteristic freemartin effect in fetal rat prospective ovaries exposed to it in vitro. *Development* 100:43–55
 68. **Schmahl J, Kim Y, Colvin JS, Ornitz DM, Capel B** 2004 *Fgf9* induces proliferation and nuclear localization of *FGFR2* in Sertoli precursors during male sex determination. *Development* 131:3627–3636
 69. **Buehr M, Gu S, McLaren A** 1993 Mesonephric contribution to testis differentiation in the fetal mouse. *Development* 117:273–281
 70. **Tilmann C, Capel B** 1999 Mesonephric cell migration induces testis cord formation and Sertoli cell differentiation in the mammalian gonad. *Development* 126:2883–2890
 71. **Yao HH, DiNapoli L, Capel B** 2003 Meiotic germ cells antagonize mesonephric cell migration and testis cord formation in mouse gonads. *Development* 130:5895–5902
 72. **Britt KL, Drummond AE, Dyson M, Wreford NG, Jones ME, Simpson ER, Findlay JK** 2001 The ovarian phenotype of the aromatase knockout (ArKO) mouse. *J Steroid Biochem Mol Biol* 79:181–185
 73. **Brennan J, Tilmann C, Capel B** 2003 *Pdgfr- α* mediates testis cord organization and fetal Leydig cell development in the XY gonad. *Genes Dev* 17:800–810
 74. **Kitamura K, Yanazawa M, Sugiyama N, Miura H, Iizuka-Kogo A, Kusaka M, Omichi K, Suzuki R, Kato-Fukui Y, Kamiirisa K, Matsuo M, Kamijo S, Kasahara M, Yoshioka H, Ogata T, Fukuda T, Kondo I, Kato M, Dobyns WB, Yokoyama M, Morohashi K** 2002 Mutation of *ARX* causes abnormal development of forebrain and testes in mice and X-linked lissencephaly with abnormal genitalia in humans. *Nat Genet* 32:359–369
 75. **Bardoni B, Zanaria E, Guioli S, Florida G, Worley KC, Tonini G, Ferrante E, Chiumello G, McCabe ER, Fraccaro M, Zuffardi O, Camerino G** 1994 A dosage sensitive locus at chromosome Xp21 is involved in male to female sex reversal. *Nat Genet* 7:497–501
 76. **Swain A, Narvaez V, Burgoyne P, Camerino G, Lovell-Badge R** 1998 *Dax1* antagonizes *Sry* action in mammalian sex determination. *Nature* 391:761–767

77. **Meeks JJ, Weiss J, Jameson JL** 2003 Dax1 is required for testis determination. *Nat Genet* 34:32–33
78. **McLaren A** 2000 Germ and somatic cell lineages in the developing gonad. *Mol Cell Endocrinol* 163:3–9
79. **Matzuk MM, Lamb DJ** 2002 Genetic dissection of mammalian fertility pathways. *Nat Med* 8(Suppl):S33–S40
80. **Menke DB, Koubova J, Page DC** 2003 Sexual differentiation of germ cells in XX mouse gonads occurs in an anterior-to-posterior wave. *Dev Biol* 262:303–312
81. **McElreavey K, Vilain E, Abbas N, Herskowitz I, Fellous M** 1993 A regulatory cascade hypothesis for mammalian sex determination: SRY represses a negative regulator of male development. *Proc Natl Acad Sci USA* 90:3368–3372
82. **Vainio S, Heikkila M, Kispert A, Chin N, McMahon AP** 1999 Female development in mammals is regulated by Wnt-4 signalling. *Nature* 397:405–409
83. **Jeays-Ward K, Hoyle C, Brennan J, Dandonneau M, Alldus G, Capel B, Swain A** 2003 Endothelial and steroidogenic cell migration are regulated by WNT4 in the developing mammalian gonad. *Development* 130:3663–3670
84. **Biason-Lauber A, Konrad D, Navratil F, Schoenle EJ** 2004 A WNT4 mutation associated with Mullerian-duct regression and virilization in a 46,XX woman. *N Engl J Med* 351:792–798
85. **Jordan BK, Mohammed M, Ching ST, Delot E, Chen XN, Dewing P, Swain A, Rao PN, Elejalde BR, Vilain E** 2001 Up-regulation of WNT-4 signaling and dosage-sensitive sex reversal in humans. *Am J Hum Genet* 68:1102–1109
86. **Jordan BK, Shen JH, Olaso R, Ingraham HA, Vilain E** 2003 Wnt4 overexpression disrupts normal testicular vasculature and inhibits testosterone synthesis by repressing steroidogenic factor 1/ β -catenin synergy. *Proc Natl Acad Sci USA* 100:10866–10871
87. **Stark K, Vainio S, Vassileva G, McMahon AP** 1994 Epithelial transformation of metanephric mesenchyme in the developing kidney regulated by Wnt-4. *Nature* 372:679–683
88. **Brisken C, Heineman A, Chavarria T, Elenbaas B, Tan J, Dey SK, McMahon JA, McMahon AP, Weinberg RA** 2000 Essential function of Wnt-4 in mammary gland development downstream of progesterone signaling. *Genes Dev* 14:650–654
89. **Treier M, Gleiberman AS, O'Connell SM, Szeto DP, McMahon JA, McMahon AP, Rosenfeld MG** 1998 Multistep signaling requirements for pituitary organogenesis in vivo. *Genes Dev* 12:1691–1704
90. **Heikkila M, Peltoketo H, Leppaluoto J, Ilves M, Vuolteenaho O, Vainio S** 2002 Wnt-4 deficiency alters mouse adrenal cortex function, reducing aldosterone production. *Endocrinology* 143:4358–4365
91. **Bishop CE, Whitworth DJ, Qin Y, Agoulnik AI, Agoulnik IU, Harrison WR, Behringer RR, Overbeek PA** 2000 A transgenic insertion upstream of *sox9* is associated with dominant XX sex reversal in the mouse. *Nat Genet* 26:490–494
92. **Gasca S, Canizares J, De Santa Barbara P, Mejean C, Poulat F, Berta P, Boizet-Bonhoure B** 2002 A nuclear export signal within the high mobility group domain regulates the nucleocytoplasmic translocation of SOX9 during sexual determination. *Proc Natl Acad Sci USA* 99:11199–11204

Endocrinology is published monthly by The Endocrine Society (<http://www.endo-society.org>), the foremost professional society serving the endocrine community.